



Microsemi SoC Products Group™ (formerly Actel) License Troubleshooting Guide

This document does not replace the License Installation Instructions that are emailed with the Microsemi SoC Products Group Software License files.

Document Organization

This document addresses the most common licensing setup issues that can cause license error messages. The organization is as follows:

- [Node-Locked License Troubleshooting Tips](#)
 - DiskID Node-Locked Licenses
 - Dongle based Node-Locked Licenses
- [Floating License Troubleshooting Tips](#)
- [Specific License Related Error Messages and Possible Solutions](#)
- [Instructions for Contacting Microsemi SoC Products Group Tech Support for Further Debugging](#)

License Availability

For general information such as the types of Licenses available for Microsemi SoC Products Group Software as well as the features and tools included with each license type, please see the web page:

<http://www.actel.com/products/software/libero/licensing.aspx>

DirectCore IP Licensing for CoreConsole and SmartDesign

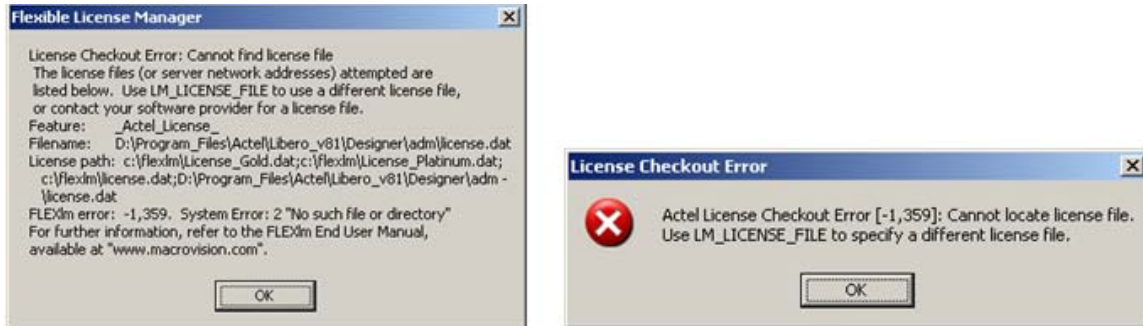
Current software licenses come with a set of free DirectCore IP included. Some IP Cores have specific licenses that must be requested through a sales office. See the web page below to identify which IP Cores are included with a Libero® IDE License:

<http://www.actel.com/products/ip/directcores.aspx>

Troubleshooting a Node-Locked License

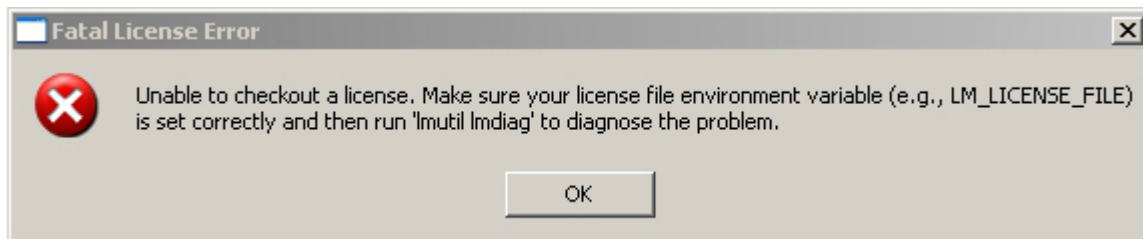
The troubleshooting steps presented in this guide can help resolve the “generic” license errors (shown below) reported by the various software tools used in the Microsemi SoC Products Group FPGA Design Flow.

Opening Libero IDE or Designer:



Error 1: Libero or Designer License Checkout Error – “Cannot Locate License File”

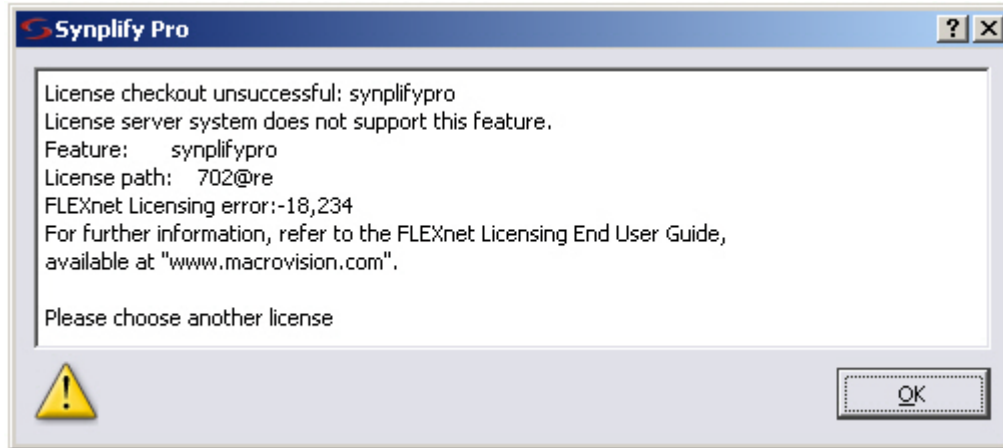
Opening ModelSim AE:



Error 2: ModelSim AE Fatal License Error – “Unable to Checkout a License”

Opening Synplify AE or Synplify Pro AE:



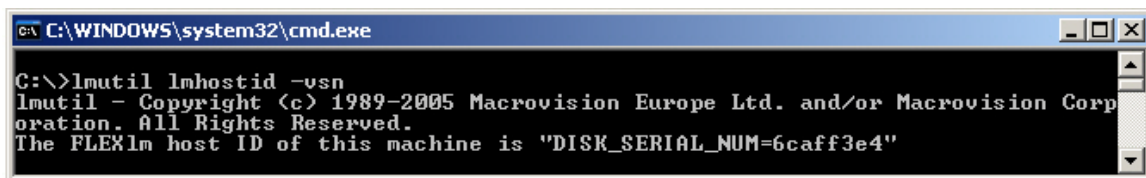


Error 3: Synplify AE – “License for feature synplify_pc or synplifypro is not available”

Node-Locked License Troubleshooting Checklist

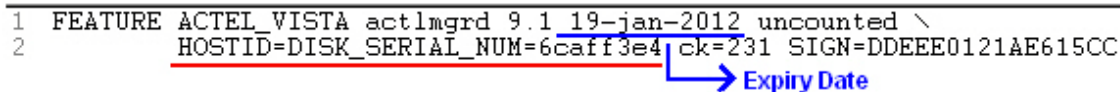
If you have a Dongle Based License, continue to Step 2.

1. Confirm that the license.dat file is locked to the correct DiskID of the system drive (typically the C: Drive) and that the License.dat file is located on the system drive regardless of which drive the software is installed on.
 - To obtain the DiskID of the system drive (typically the C: Drive):
 - a. Open a Windows Command Prompt by selecting **Start > Run**, type `cmd` and click **OK**.
 - b. Type: `lmutil lmhostid -vsn` to display the DiskID of the C: Drive (as shown below). Alternatively, you can use the command `vol c:`



```
C:\WINDOWS\system32\cmd.exe
C:\>lmutil lmhostid -vsn
lmutil - Copyright (c) 1989-2005 Macrovision Europe Ltd. and/or Macrovision Corporation. All Rights Reserved.
The FLEXlm host ID of this machine is "DISK_SERIAL_NUM=6caff3e4"
```

- To verify the DiskID to which the License.dat file is locked:
 - a. Open the License.dat file in a text editor.
 - b. The DiskID highlighted in red below must match that of your system drive (C: Drive).

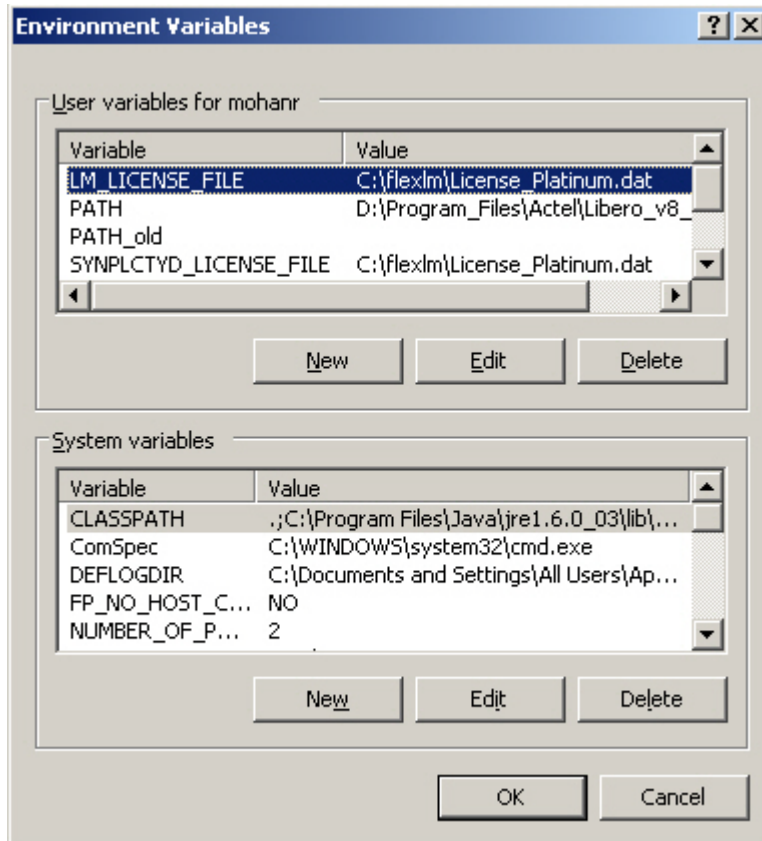


```
1 FEATURE ACTEL_VISTA actlmgrd 9.1 19-jan-2012 uncounted \
2   HOSTID=DISK_SERIAL_NUM=6caff3e4 ck=231 SIGN=DDEEE0121AE615CC
                                     Expiry Date
```

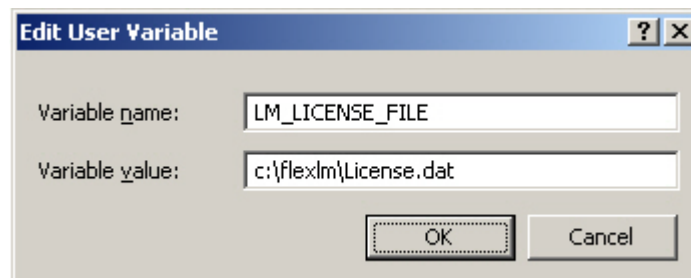
NOTE: The text contained within a particular PACKAGE, INCREMENT, or FEATURE line within a License.dat file should not be modified. Only complete FEATURE lines may be moved or copied into other License files. To request a change to your License.dat file, please contact Microsemi SoC Products Group Tech Support or Microsemi SoC Products Group Customer Service using the contact information located on the webpage <http://www.actel.com/support/default.aspx>

2. Ensure that your license has not expired by checking the expiry date contained in the License.dat file. Open the License.dat file in a text editor and confirm that the expiry date has not passed. Refer to the blue highlighted text in the figure above to find the expiry date.
3. Confirm that the Environment Variables for Libero and Synplify are set correctly.

- Environment Variables can be accessed by selecting **Start > Settings > Control Panel**, double-clicking **System**, viewing the **Advanced Tab** and clicking the **Environment Variables** button.
- Ensure that the Variables are created as User Variables under the correct user profile/login.



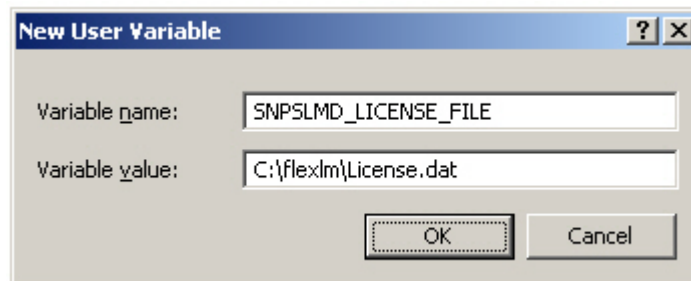
- The environment variable LM_LICENSE_FILE is used by Libero IDE, Designer and ModelSim AE to find the License.dat file to run the software. The Variable Value should specify the path of the License.dat file containing the license for these software tools.



- The environment variable SNPSLMD_LICENSE_FILE is used by Synopsys Software tools such as Synplify Pro AE and Identify AE to find the

License.dat. The Variable Value must specify the path of the License.dat file for these software tools.

Note: The Synopsys software bundled with Libero v9.1 or later (Synplify Pro AE E-2010.09A-1 and Identify AE E-2010.09A-1 or later) requires the SNPSLMD_LICENSE_FILE variable. Prior versions of Synplify and Identify require the variable SYNPLCTYD_LICENSE_FILE to be set instead. Legacy versions of Synplify software from Synplicity require the older environment variable SYNPLICITY_LICENSE_FILE



- The Variable Names shown above must be spelled correctly, or they will not be recognized by Software during invocation.
- The path in the variable value must be a valid and accurate path.
- If you have multiple License Files or License Locations to specify in one variable please separate the paths with a semicolon “;” and do not use spaces before and after the “;”. For example:

```
c:\flexlm\License.dat;c:\flexlm\License2.dat
```

- If the computer is running on a Linux operating system, then the multiple paths are separated with a colon “:” instead of a semi-colon.
4. Ensure that the tool you are invoking is actually licensed by your License File. For example, new licenses no longer include a license feature line for the non-pro version of Synplify Synthesis Software. Instead, there is a license feature for the Synplify Pro Synthesis software. Thus, the software tool profile must be checked to ensure it is pointing to the path of the synplify_pro.exe instead of synplify.exe
 5. Ensure that the software tools are not being invoked via a remote desktop connection when using a Node-Locked license. Due to restrictions from the third-party software vendors, Node-Locked licenses provided by Microsemi SoC Products Group do not allow the software tools to be run via a remote desktop connection. To run Microsemi SoC Products Group Libero IDE or Designer remotely, please see the PDF file linked below (Acrobat Reader required):

http://www.actel.com/documents/Libero_Remote_Access.pdf.



There are no remote-desktop restrictions on a Floating License.

6. Ensure that there is not a copy of an old License.dat file in the folder path:

<Libero_Install_Folder>\Designer\adm\

If you cannot resolve your DiskID License Checkout Error using the steps above, please follow the Node Locked License instructions for [Contacting Microsemi SoC Products Group Technical Support](#) to debug the issue further.

Dongle Based Node-Locked License Troubleshooting Checklist

1. Confirm that the License is locked to the correct HostID for the appropriate dongles.

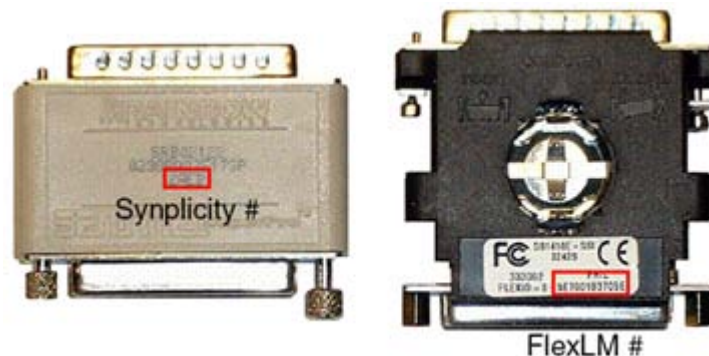
Skip to the [USB Dongle License section](#) if you have a USB Dongle license.

NOTE: Parallel Port Dongles have been discontinued. Please read the Product Discontinuation Notice (PDN) 0802 found at http://www.actel.com/documents/PDN0802_LiberoPAR.pdf

- For a Parallel Port Dongle License, the figure below shows how to find the dongle ID numbers for the two dongles available from Microsemi SoC Products Group. The Black Dongle is used for Libero IDE, Designer and ModelSim AE licensing. The Cream/Gray colored Dongle is used for Synplicity licensing.

On the FlexID dongle the Microsemi SoC Products Group FlexID number is a hexadecimal number in form 8-XXXXXXX, usually found on the opposite side of the FLEXid label.

The Synplify dongle, typically a Rainbow Technologies Sentinel, has a four digit hex (such as 2A9F) Synplify Security key number found above the words "Sentinel Superpro" (as shown in the figure below)



- Verify the Parallel Port Dongle IDs to which the License.dat file is locked:
 - a. Browse to the location of the License.dat file and open the file in a text editor.
 - b. The Dongle ID of the Black FLEXid Parallel Port Dongle can be found in the Libero IDE Feature Lines, as shown in the figure below.

```

1 FEATURE ACTEL_SUMMIT actlmgrd 8.0 26-nov-2008 uncounted \
2   HOSTID=FLEXID=8-5E7001F6156F ck=192 SIGN=747840F24A221C82
3 PACKAGE AEALL1 actlmgrd 1999.400 COMPONENTS="Viewdraw Actel \
4   ActelACT-1Library ActelACT-2Library ActelACT-3Library Generic \
5   GenericCAE EDIF_NetlistWriter ViewgenSchematicGenerator \
6   Export1076 EDIF_NetlistReader GRAFLIB VERILNET ViewBASE WDIRDB \
7   Altran Attduap Attmerge Attupdat Mega ViewGraf PARTSLIST" \
8   SIGN=B56ED128C7D0
9 INCREMENT AEALL1 actlmgrd 1999.400 26-nov-2008 uncounted \
10  VENDOR_STRING="Platform:NT exclusive:35" \
11  HOSTID=FLEXID=8-5E7001F6156F ck=198 SIGN=EE744576D9C6
12 FEATURE wflite syncad 14.0 26-nov-2008 uncounted 7143F6A56002 \
13  HOSTID=FLEXID=8-5E7001F6156F ck=44
14 FEATURE reactiveexport syncad 14.0 26-nov-2008 uncounted C2C8484660DE \
15  HOSTID=FLEXID=8-5E7001F6156F ck=62
16 FEATURE basicvcimport syncad 14.0 26-nov-2008 uncounted 1C47D3E8CA7A \
17  HOSTID=FLEXID=8-5E7001F6156F ck=200

```

- c. The Dongle ID of the Grey/Cream Synplify Dongle can be found in the Synplify Feature Lines, as shown below.

```

18 FEATURE synplifypro synplctyd 2005.155 26-nov-2008 uncounted \
19  CDC7045E124EB75D15D8 VENDOR_STRING=actel.nl HOSTID=SKEY=2DF1 \
20  NOTICE=CUSTID=QAPNT494079587390382 SIGN="0293 6821 6CFB 28F8 \
21  0B6C 2211 AD2D 8ABD 7127 003A 5E03 0776 2CE1 1B9D 3CC4 26FD \
22  F96C 8278 D7BB 2679 C28C"
23 FEATURE synplify_pc synplctyd 2005.155 26-nov-2008 uncounted \
24  BDE7947E9DD03853B796 VENDOR_STRING=actel.nl HOSTID=SKEY=2DF1 \
25  NOTICE=CUSTID=QASNT701885984938558 SIGN="01E7 D3D5 AB63 599D \
26  0A63 4244 4210 02CF 1AC9 9F75 4B01 F132 A144 C219 5912 613B \
27  A25D 1202 6D79 1D92 347B"

```

NOTE: Do not edit the text contained within a particular PACKAGE, INCREMENT, or FEATURE line. Only complete FEATURE lines may be moved or copied into other License files. To request a change to your License.dat file, please contact Microsemi SoC Products Group Tech Support or Microsemi SoC Products Group Customer Service using the contact information located on the webpage

<http://www.actel.com/support/default.aspx>

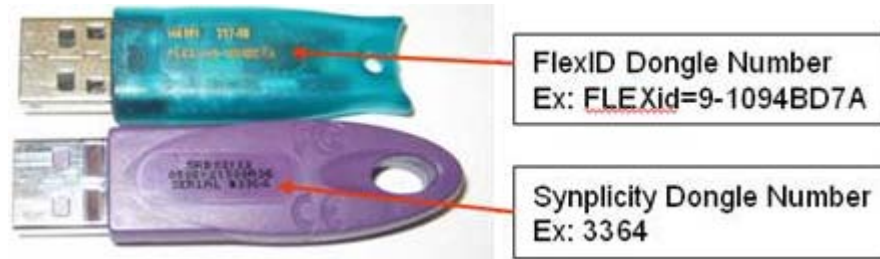
- **For newer USB Dongle Licenses**, there is only 1 USB FlexID Dongle required for Libero IDE, Designer, ModelSim AE, Synplify AE and Identify AE Licensing:

Previously, older USB Dongle Licenses additionally used a 2nd USB Dongle for Synplify software licensing.

The format of the Dongle IDs is as follows:

- The primary USB Dongle is called the FlexID Dongle. The FlexID number is a hexadecimal number in the form 9-XXXXXXXX, as shown in the figure below.
- The **DISCONTINUED** Purple Synplify USB Dongle has a four-digit hex ID found on the opposite side of the "Rainbow SuperPro Label" as shown below.

NOTE: This 4-digit USB Dongle is no longer necessary since Synopsys software features are now tied to the FlexID Dongle.



- To verify the USB Dongle IDs to which the License.dat file is locked:
 - a. Open the License.dat file in a text editor.
 - b. The Dongle ID of the FlexID USB Dongle can be found in the Libero Feature Lines as shown below

```
INCREMENT AEALL1 actlmgrd 6.0 29-may-2009 uncounted \
  VENDOR_STRING="Platform:NT exclusive:35" \
  HOSTID=FLEXID=9-1094bd7a ck=234 SIGN=AC35F9E0DD12
FEATURE ACTEL_SUMMIT actlmgrd 8.0 29-may-2009 uncounted \
  HOSTID=FLEXID=9-1094bd7a ck=139 SIGN=CFFC876C14A8D90C
```

- c. For older licenses that required a 2nd Synplify USB Dongle, the ID can be found in the Synplify Feature Lines as shown below. Recent licenses will have the Synplify software tied to the same Dongle ID as the Libero IDE Feature line

```
FEATURE synplify_pc synplctyd 2005.161 29-may-2009 uncounted \
  0D1849ADF9FF02BE68F7 VENDOR_STRING=actel,nl HOSTID=SKEY=3364 \
  NOTICE=CUSTID=QASNT127850344947432 SIGN="0203 6460 10ED D550 \
  C4F7 BE1C 6A85 B1BF 0A1E 2408 5501 791B 37A1 2630 47A3 B3CC \
  DCBA D7D5 E5CD D849 E71B"
FEATURE synplifypro synplctyd 2005.161 29-may-2009 uncounted \
  1DA8099D04D83FF32E0D VENDOR_STRING=actel,nl HOSTID=SKEY=3364 \
  NOTICE=CUSTID=QAPNT455270387398008 SIGN="01CA B778 7FBE AB10 \
  77F2 B1C7 BBB4 9392 5A26 83FB EAO2 8ABC F7B9 48A6 99B8 FE8B \
  23E8 1A17 1481 2E41 66EC"
```

2. Ensure that the latest Parallel Port or USB Dongle Driver Software is installed. Follow the Driver Installation Instructions found on the web page:

<http://www.actel.com/products/software/libero/drivers.aspx>

- a. Run the appropriate USB or Parallel Port FlexLM Cleanup Utility (unless there are additional hardware dongles connected to the PC)
- b. For a Parallel port dongle, run the Flex-ID Dongle Driver Update and ensure that the Flex-ID 8 option is checked
- c. For the FlexID USB Dongle (Flex-ID 9), install the MacroVision FlexLM driver
- d. For older licenses still tied to the purple Synplify USB Dongle, use the Sentinel Installer ensuring that the USB System Driver is enabled for installation as shown below.



3. Confirm that the computer recognizes the USB Dongles correctly.
 - a. Select **Start > Settings > Control Panel**, double-click **System**, select the **Hardware Tab** and click **Device Manager**.
 - b. Expand the Universal Serial Bus controllers list and check to see whether Rainbow Superpro Sentinel USB Dongle and FlexLM USB Dongle are listed.

If you cannot resolve your Dongle Based License Checkout Error using the steps above, please follow the Node Locked License instructions for [Contacting Microsemi SoC Products Group Technical Support](#) to debug the issue further.

Troubleshooting a Floating License

A floating license environment uses a license server from which a client machine can checkout an available software license. From the client side, the [possible error message\(s\)](#) will be the same as those shown for the Node-Locked Licenses in the Node-Locked section.

On the License Server

1. Ensure that the License.dat file on the License Server is tied to the correct HOSTID of the server. Typically, the HOSTID of the Server is the MAC ID of the Server Machine.

Note that Windows and Linux Floating Licenses are both tied to the MAC ID of the Server's Network Interface Card (NIC) while Solaris Floating Licenses are tied to an 8-digit HOSTID. It is important to specify the Operating System for the License Server when ordering the Floating License.

2. The License Server does not require installation of the Microsemi SoC Products Group Software Suite, but must have the correct license daemon programs loaded. The daemon executables can be downloaded at the bottom of the web page:
<http://www.actel.com/products/software/libero/licensing.aspx>
3. If the License Server hosts multiple software licenses the following conditions must be satisfied:
 - The HOSTID of all the license features hosted on the server must match. FlexLM does not allow one License Server to host multiple licenses which are locked to different HOSTIDs
 - A license daemon cannot be invoked more than once on a single license server. Therefore, all license features that require the same license daemon must be combined into one license file. This applies to non-Microsemi SoC Products Group Editions of third-party software as well. The daemon used by a license feature can be identified as shown in the blue underlined text below. One common approach to solve this issue is to create a single license file for each daemon that must be invoked on a particular server. This is accomplished by moving all license features requiring the particular daemon into one license file then restarting the license server.

Server Name	HostID	Port#
SERVER wxp-apps004	00188b026b75	1702

```

DAEMON actlmgrd C:\float_lic\actlmgrd
DAEMON mgcld C:\float_lic\mgcld
VENDOR snpslmd C:\float_lic\snpslmd

```

→ **Daemon Name and path to .exe**

```

FEATURE ACTEL_VISTA actlmgrd 9.1 14-dec-2011 1 OVERDRAFT=2 ck=164 \
SIGN=526C5645316EC5B4

```

← **Overdraft Limit**

```

INCREMENT SSST snpslmd 1.0 14-Dec-2011 1 8D4D667E1C10F8F016FA \
VENDOR_STRING="31c33 8fba8 fd69e 60175 99cc4 26e0e a8017 599cc 426e0 ea8" \
NOTICE="Licensed to Actel Corporation - OEM [DO NOT DELETE/MODIFY SSST OR ANY
SN=TK:0:0:115743 ISSUER="Synopsys Inc. [12/14/2010 12:31:16 25270]"
INCREMENT synplifypro_actel snpslmd 2010.09 14-dec-2011 1 \
VENDOR_STRING="^1+S.actel.actel_om ISSUED=14-dec-2010 ck=132 \
SN=TK:4878-0:140263:115743 AUTH={ snpslmd=( \
LK=3D7D46EED3937B735A69) synplctyd=( LK=6D9D96BEBE07BFC05C48 \
SIGN="03AC 3E28 8756 F0C4 E350 A3A0 A8C2 658A 739D 5FB6 7A00 \
06B4 4515 1CCD A8D2 6A0B E43F C562 47F4 AE6F EBF5" ) }
INCREMENT SSST snpslmd 1.0 14-Dec-2011 1 2DADA65E9C16322BFA75 \
VENDOR_STRING="c67e8 d0083 f7213 8f9c7 f7377 b3f51 0cf9c 7f737 7b3f5 10c" \
NOTICE="Licensed to Actel Corporation - OEM [DO NOT DELETE/MODIFY SSST OR ANY
SN=TK:0:0:241339 ISSUER="Synopsys Inc. [12/14/2010 12:31:15 25270]"
INCREMENT identdebugger_actel snpslmd 2010.09 14-dec-2011 1 \
VENDOR_STRING="^1+S.actel ISSUED=14-dec-2010 ck=125 \
SN=TK:4841-0:140263:241339 AUTH={ snpslmd=( \
LK=2DDD46DEC89EA1D1503E) synplctyd=( LK=5DFD66AEEB9C96895EC1 \
SIGN="0279 3820 1C12 0116 3475 EB65 3BB2 387C 0416 36F8 4A01 \
494B 1F64 F993 FFE7 C52B FB9D 4A89 1F60 BA33 96E3" ) }
INCREMENT identifyinstrumentor_encrypt snpslmd 2010.09 14-dec-2011 1 \
VENDOR_STRING="^1+S ISSUED=14-dec-2010 ck=35 \
SN=TK:4841-0:140263:241339 AUTH={ snpslmd=( \
LK=9D3D46CE4FB28DA682A1) synplctyd=( LK=0DCDD62ECA0072CCD490 \
SIGN="0084 5C79 517D 6359 2A02 6D62 CA62 40CF 9B33 0137 1B02 \
E6BE FOBA F5B0 00B4 3269 B2AB E26E D82D FAB9 7533" ) }
INCREMENT identinstrumentor_actel snpslmd 2010.09 14-dec-2011 1 \
VENDOR_STRING="^1+S.actel ISSUED=14-dec-2010 ck=98 \
SN=TK:4841-0:140263:241339 AUTH={ snpslmd=( \
LK=7DADB6AE75C5D3CE55B1) synplctyd=( LK=FD1D46BE19BF2FE162D2 \
SIGN="03ED BOF2 ADEB E277 3A1A F912 69D5 F11C A7AF A944 4B02 \
56D7 CEF2 OCC4 73E3 DD4A 859F 6B66 6622 74F8 77CD" ) }
INCREMENT actelmsimvlog mgcld 2011.12 14-dec-2011 1 4D0DB61E0E419E0E1E92 \
\
VENDOR_STRING=8C7325C8 ISSUER="Actel Corp." SN=27643007 SIGN2="09A1 \
4C68 1361 9A8B A803 59AF CF75 32F0 C7AE 5264 AE93 2572 D25E 599D DA64 \
0937 61DD F6BD 884E EC5F FC45 B2FC 3DBD DE17 E6FC A1B2 5A37 8874 CBEC \
11B2"

```

← **Number of Seats**

← **Daemon used for this feature increment**

```

INCREMENT actelmsimvhdl mgcld 2011.12 14-dec-2011 1 DD3D560ECEFE9C9222A3 \
\
VENDOR_STRING=95B1DB45 ISSUER="Actel Corp." SN=27643008 SIGN2="07D0 \
7FA5 DCD8 49AD OFDA 2378 8CA1 B199 539F 0898 A7D9 EBF5 D95E 3735 0956 \
11FA F81A A9AF OFEB 0735 1F90 479D E670 9E20 05A2 4F23 BD64 8FE0 E72B \
23E7"

```

4. To verify that the License Server is running and serving the desired license features, use the LM Utilities Tools as described below.
 - The LM Utilities can be invoked from the command prompt by using the command `lmutil` with one of the available options shown below.

```

C:\Float_Lic>lmutil
lmutil - Copyright (c) 1989-2005 Macrovision Europe Ltd. and/or Macrovision Corp
ration. All Rights Reserved.
usage:  lmutil lmborrow -status
        lmutil lmborrow -clear
        lmutil lmborrow <all!vendor> dd-mm-yy:[:time]
        lmutil lmborrow -return [-c licfile] [-d display_name] [-fqdn] feature
        lmutil lmdiag [-c licfile] [-n]
        lmutil lmdown [-c licfile] [-q] [-all] [-vendor name] [-force] [-help]
        lmutil lmhostid [-ether!-internet!-user!-n!-string
            -display!-hostname!-hostdomain!-vsn!-flexid!-long!-utf8]
        lmutil lminstall [-i infile] [-o outfile]
            [-overfmt {2, 3, 4, 5, 5.1, 6, 7.1, 8}]
            [-odecimal] [-maxlen n]
        lmutil lmnewlog [-c licfile] vendor new-file, or
        lmutil lmnewlog [-c licfile] feature new-file
        lmutil lmpath -status
        lmutil lmpath -override <all ! vendor > path
        lmutil lmpath -add <all ! vendor > path
        lmutil lmremove [-c licfile] feature user host display
        lmutil lmremove [-c licfile] -h feature host port handle
        lmutil lmreread [-c licfile] [-vendor name] [-all]
        lmutil lmswitchr [-c licfile] vendor new-file, or
        lmutil lmswitchr [-c licfile] feature new-file
        lmutil lmstat [-c licfile] [lmstat-args]
        lmutil lmswitch [-c licfile] vendor new-file, or
        lmutil lmswitch [-c licfile] feature new-file
        lmutil lmver flexlm_binary
        lmutil -help <prints this message>
        lmutil utility_name -help <display detailed usage information>

C:\Float_Lic>_

```

- The License Server HostID can be obtained with the command `lmutil lmhostid` as shown below

```

C:\Float_Lic>lmutil lmhostid
lmutil - Copyright (c) 1989-2005 Macrovision Europe Ltd. and/or Macrovision Corp
ration. All Rights Reserved.
The FLEXlm host ID of this machine is "00065bc5c1fa"

C:\Float_Lic>

```

- The License Server status can be obtained with the command `lmutil lmstat` as shown below

```

C:\Float_Lic>lmutil lmstat -c C:\Float_Lic\License_Gold_Float.dat
lmutil - Copyright (c) 1989-2010 Flexera Software, Inc. All Rights Reserved.
Flexible License Manager status on Thu 3/3/2011 17:56

[Detecting lmgrd processes...]
License server status: 17020wpx-apps004
  License file(s) on wpx-apps004: C:\Float_Lic\License_Gold_Float.dat:
wpx-apps004: license server UP (MASTER) v11.9

Vendor daemon status (on wpx-apps004):
  actlmgrd: UP v11.4
  mgcld: UP v10.8
  snpslmd: UP v11.6

C:\Float_Lic>_

```

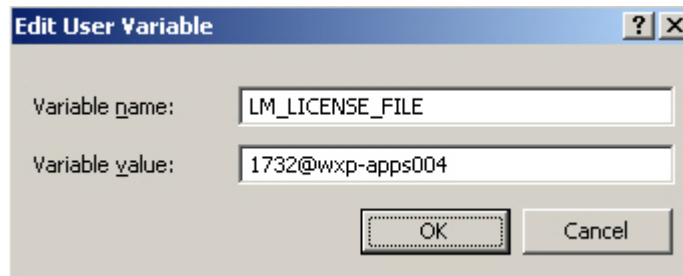
- The software features available for checkout can be displayed with the command `lmutil lmdiag -n` as shown below.

```
C:\Float_Lic>lmutil lmdiag -c C:\Float_Lic\License_Gold_Float.dat
lmutil - Copyright (c) 1989-2010 Flexera Software, Inc. All Rights Reserved.
FLEXnet diagnostics on Thu 3/3/2011 18:08

-----
License file: C:\Float_Lic\License_Gold_Float.dat
-----
"ACTEL_UISTA" v9.1, vendor: actlmgrd
  License server: wxpl-mohanr
  floating license expires: 14-dec-2011
  2 Overdraft available, 3 in total (<= 1 + 2)
This license can be checked out
-----
"actelmsimvlog" v2012.03, vendor: mgcld
  License server: wxpl-mohanr
  floating license starts: 3-mar-2011, expires: 14-dec-2011
This license can be checked out
-----
"actelmsimvhd1" v2012.03, vendor: mgcld
  License server: wxpl-mohanr
  floating license starts: 3-mar-2011, expires: 14-dec-2011
This license can be checked out
-----
"ACTEL_CORECONSOLE" v1.0, vendor: actlmgrd
  License server: wxpl-mohanr
  floating license expires: 14-dec-2011
This license can be checked out
-----
"SSST" v1.0, vendor: snpslmd
  License server: wxpl-mohanr
  floating license starts: 3-mar-2011, expires: 14-Dec-2011
This license can be checked out
-----
"synplifypro_actel" v2010.09, vendor: snpslmd
  License server: wxpl-mohanr
  floating license starts: 3-mar-2011, expires: 14-dec-2011
This license can be checked out
-----
"SSST" v1.0, vendor: snpslmd
  License server: wxpl-mohanr
  floating license starts: 3-mar-2011, expires: 14-Dec-2011
This license can be checked out
-----
"identdebugger_actel" v2010.09, vendor: snpslmd
  License server: wxpl-mohanr
  floating license starts: 3-mar-2011, expires: 14-dec-2011
This license can be checked out
-----
"identifyinstrumentor_encrypt" v2010.09, vendor: snpslmd
  License server: wxpl-mohanr
  floating license starts: 3-mar-2011, expires: 14-dec-2011
This license can be checked out
-----
"identinstrumentor_actel" v2010.09, vendor: snpslmd
  License server: wxpl-mohanr
  floating license starts: 3-mar-2011, expires: 14-dec-2011
This license can be checked out
-----
```

On the Floating License Client

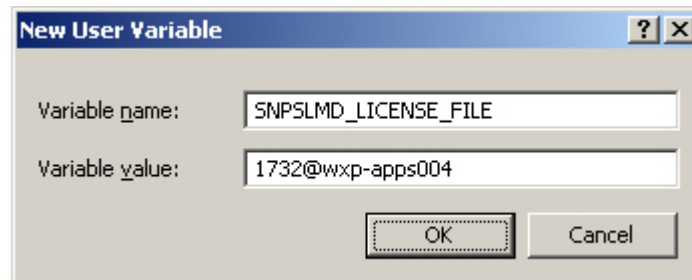
5. Ensure that the environment variables for Libero IDE and Synplify on the Client Computer are set correctly. To access the Environment Variables click **Start > Settings > Control Panel**, double-click **System**, open the **Advanced Tab** and click the **Environment Variables** button.
- To checkout a Floating License when using a Client Computer, the environment variable LM_LICENSE_FILE is used by Libero IDE, Designer and ModelSim AE. The Variable Value must specify the Port Number and Server Name of the License Server in the format <port#>@<servername> as shown below.



- The environment variable SNPSLMD_LICENSE_FILE is used by Synplicity Software tools such as Synplify AE, Synplify Pro AE, and Identify AE.

Note: The Synopsys software bundled with Libero v9.1 or later (Synplify Pro AE E-2010.09A-1 and Identify AE E-2010.09A-1 or later) requires the SNPSLMD_LICENSE_FILE variable. Prior versions of Synplify and Identify require the variable SYNPLCTYD_LICENSE_FILE to be set instead. Legacy versions of Synplify software from Synplicity require the older environment variable SYNPLICITY_LICENSE_FILE

- To checkout a Floating License when using a Client Computer the Variable Value must specify the Port Number and Server Name of the License Server in the format <port#>@<servername> as shown in the figure below.





- If you have multiple paths specified in one variable please separate the paths with a semi-colon “;” and do not use spaces before and after the “;”. For example:

```
c:\flexlm\License.dat;c:\flexlm\License2.dat
```

- If the Client Computer is running on a Linux operating system, then the multiple paths are separated with a colon “:” instead of a semi-colon.
- If the License Server is setup as a Triple Redundant Server Triad, then the server triplet is specified with commas between each of the 3 server paths. The triplet is still separated from other license paths with the normal semi-colon (PC) or colon (Linux). For example:

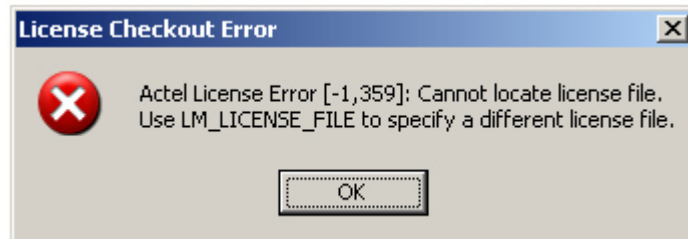
```
1702@server1,1702@server2,1702@server3;c:\flexlm\License2.dat
```

If you cannot resolve your Floating License Checkout Error using the steps above, please follow the Floating License instructions for [Contacting Microsemi SoC Products Group Technical Support](#) to debug the issue further.

Troubleshooting Specific License-Related Errors

Actel License Error [-1,359]: Cannot locate license file

This message is the generic license checkout error. It can mean that the LM_LICENSE_FILE environment variable is not set or does not point to a license file containing an Actel Libero IDE or Designer feature line.



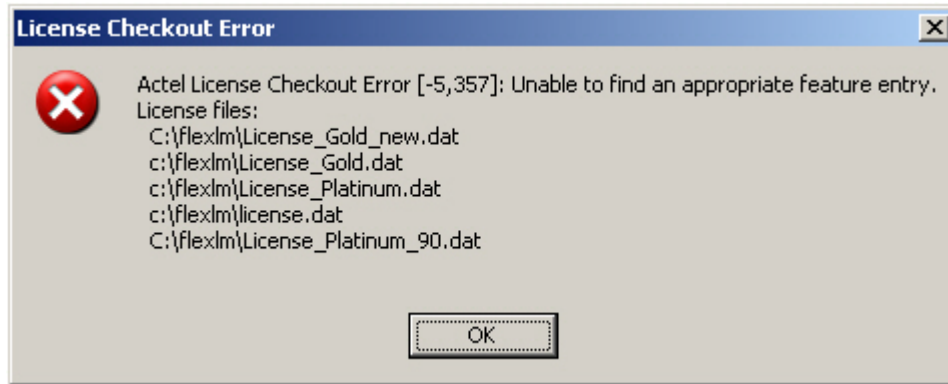
Actel License Error [-1,359]: Cannot locate license file

Action

To debug this error, perform the troubleshooting steps [outlined in this document](#). If you are unable to resolve your licensing issues, [contact Actel Technical Support](#).

Actel License Checkout Error [-5,357]: Unable to find an appropriate feature entry

This message is the generic license checkout error. It can mean that the LM_LICENSE_FILE environment variable is not set or does not point to a license file containing an Actel Libero IDE or Designer feature line. The error message lists all the locations which are being searched for the Actel License.dat file.



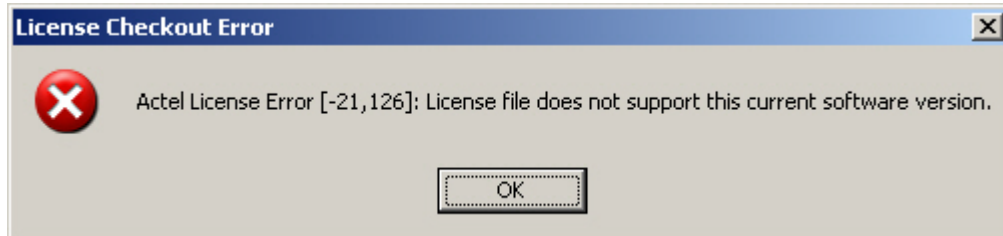
Actel License Checkout Error [-5,357]: Unable to Find an Appropriate Feature Entry

Action

To debug this error, perform the troubleshooting steps [outlined in this document](#). If you are unable to resolve your licensing issues, [contact Actel Technical Support](#).

Actel License Error [-21,126]: License file does not support this current software version

This message means that a License Feature for Libero IDE or Designer was successfully found, however the version of the license feature is too old to be used with the current version of software being invoked.



Actel License Error [-21,126]: License file does not support this current software version

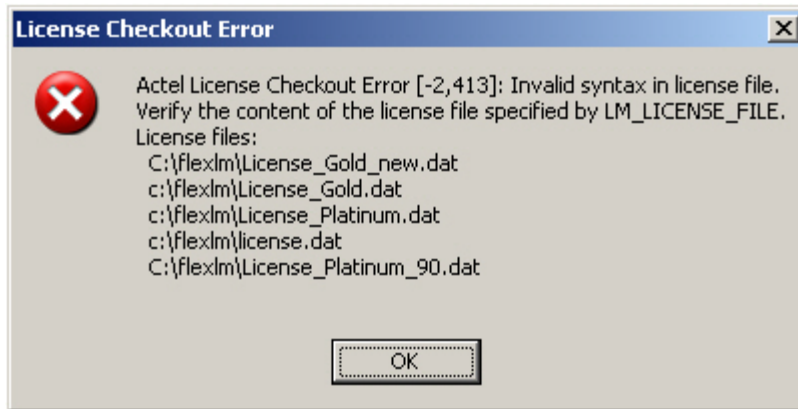
Action

Review the release notes for the version of Libero IDE or Designer in use and ensure that the License.dat file in use meets the minimum version requirements of the software. Licenses are backwards compatible, but each Libero IDE release has a minimum license feature version with which it is compatible. The Libero IDE Release History can be found at:

http://www.actel.com/download/software/libero/libero_vhistory.aspx

Actel License Checkout Error [-2,413]: Invalid syntax in license file

This message indicates that the License.dat files found in the locations searched are either corrupted or have been hand modified, rendering them invalid.



Actel License Checkout Error [-2,413]: Invalid syntax in license file

Action

Corrupted license files cannot be used and must be replaced with valid, uncorrupted files.

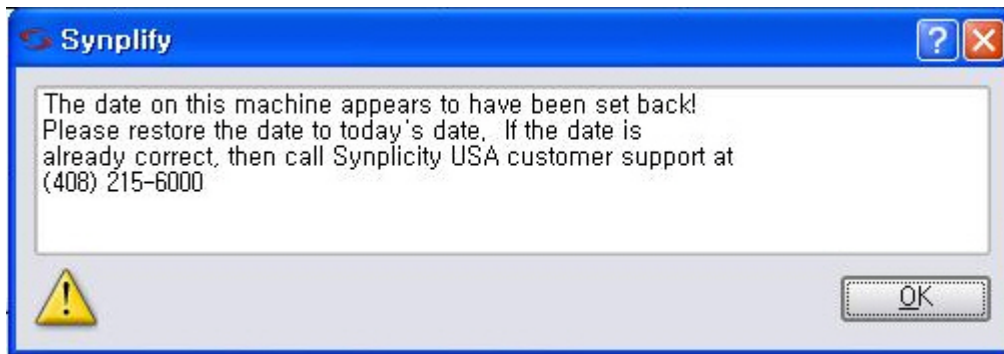
ModelSim AE or Synplify AE - System Date Set Back

The software tools perform a check to ensure that a user does not try to use it with an expired license by setting back the system date. If there are files on the computer which have a creation date in the future, the software will think that the system date has been set back and display the error messages below.

When invoking ModelSim AE the following error message is displayed:



When invoking Synplify AE the following error message is displayed:

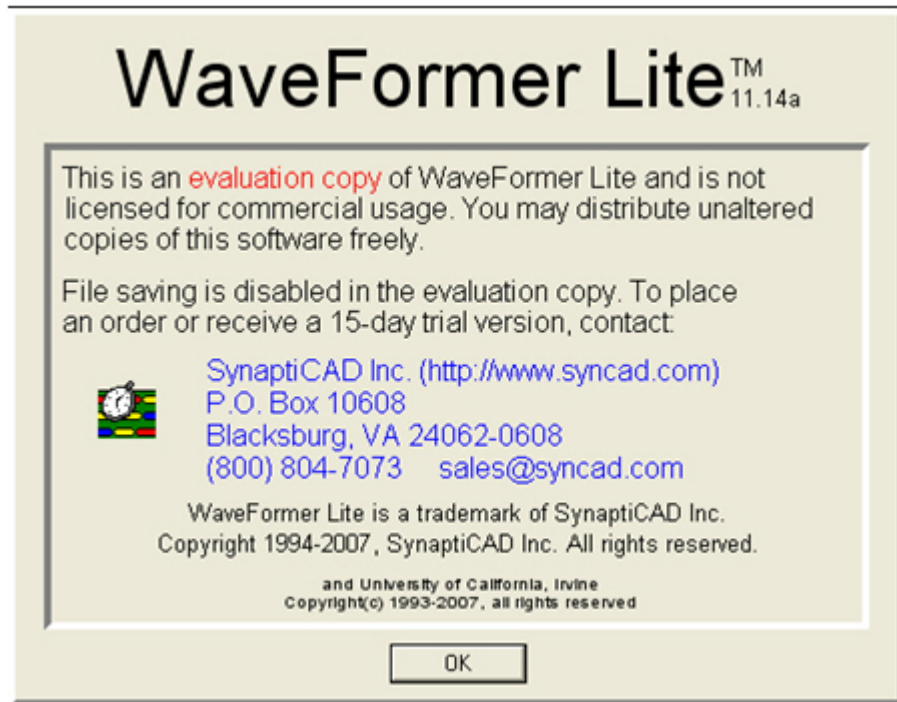


Action

Resolving the error requires that you locate all the files in the system that have a creation date in the future. These files must be removed from the system OR must have the creation/modified date properties corrected. There are programs that enable the user to modify the timestamp information of a file. Microsemi SoC Products Group does not create any software which allows file property modification, however such software might be available as shareware/trial software available as a free download from the internet. Microsemi SoC Products Group accepts no liability for any file loss due to the use of file property applications downloaded from the internet.

WaveFormer Lite - Evaluation Copy Error

When using WaveFormer Lite in Libero IDE, Waveformer Lite displays the message below and prevents you from Saving Files.



Action

WaveFormer Lite software is no longer available from Actel. Libero IDE licenses are no longer being generated with Waveformer Lite features. Please refer to the following Product Discontinuation Notice (PDN) dated Dec 1, 2009: http://www.actel.com/documents/PDN0911_waveformerlite.pdf

As an alternative to WaveFormer Lite, test benches can be created and edited using Verilog/VHDL. However, if Waveformer Lite is absolutely necessary, it can be purchased directly from SynaptiCad. Libero IDE will continue to maintain design flow support for WaveFormer Lite via the Project->Profiles menu in the Project Manager.

SynaptiCad will continue to support WaveFormer Lite as long as there is a demand. WaveFormer Lite is the Actel Edition of WaveFormer Pro. This information is also available on Actel's OEM partner page:

<http://www.actel.com/products/partners/eda/synapticad.aspx>

Devices Not Available Error

When using a free Libero IDE Software License, such as the Libero Gold License, certain devices are not available in the Device Selection Dialog.

Action

The Libero Gold Free 1 Year License has the limitation that certain high gate density FPGAs are not included with the license. Versions of Libero IDE and Designer prior to v8.4 do not allow you to design using FPGAs with more than 1 Million System Gates. Libero IDE and Designer v8.4 and later allow you to select devices up to and including those with 1.5 Million System Gates.

Single Seat License Overdraft Error

When using a 1 Seat Floating License with an Overdraft of 2, there are times when the Overdraft seats are not available.

Starting with v9.0, designer.exe and Libero.exe will only consume 1 floating license if the feature and hostid match. In other words, to run designer.exe and libero.exe concurrently, you will only need 1 floating license and no overdraft support.

Action

Overdraft on a Libero IDE Floating License allows the user of the floating license to have both Libero IDE and Designer open at the same time. For example, both Libero IDE and Designer Platinum use the ACTEL_SUMMIT feature.

With this in mind, consider the following scenario:

Assume that the License Server hosts a Single Seat Libero IDE Platinum Floating License available for checkout. This 1 seat will have an Overdraft=2. The user can open Libero IDE and checkout 1 seat of ACTEL_SUMMIT. The user can then open Designer software from within Libero IDE which will overdraw the 1 seat license by 1. Furthermore, in an incremental design flow, the user could perform a post-synthesis simulation invoked from Libero IDE while both Libero IDE and Designer programs are still open. When the Post-Synthesis Simulation on the EDN Netlist file is invoked, a Designer Process is used to convert the EDN to a Verilog or VHDL netlist. This will temporarily overdraw the 1 seat license by 2.

Even if the original Libero IDE process is closed, the 1 seat license is still counted as in use as long as any of the tools invoked by Libero IDE (which use the OVERDRAFT quota) are still open. Once all the Libero IDE and invoked software using the ACTEL_SUMMIT OVERDRAFT quota are closed, the 1 seat will become free (available) again for another user to checkout.

This 1 seat license with 2 Overdraft Seats can have the ACTEL_SUMMIT feature checked out three times in total. However, since it is only a single seat license, once it is over-drafted twice, it will not let another process try to overdraft it. The original user of the 1 seat would have to relinquish the license and overdraft quota before the two overdrafts are available again.

In an Overdraft Scenario, the LM Utility Tools could output:

Users of ACTEL_SUMMIT: (Total of 3 licenses issued; Total of 2 licenses in use)

The FlexLM keeps a count of the number of licenses issued and does not reset that count, until the original seat is no longer in use.

License Manager Searching for License in a Location Other than that Defined in LM_LICENSE_FILE

When invoking Libero IDE, Designer or ModelSim Software, the License manager is searching for a License in a location other than the path defined in the LM_LICENSE_FILE Environment Variable.

Action

The Microsemi SoC Products Group software can checkout a license from the following locations:

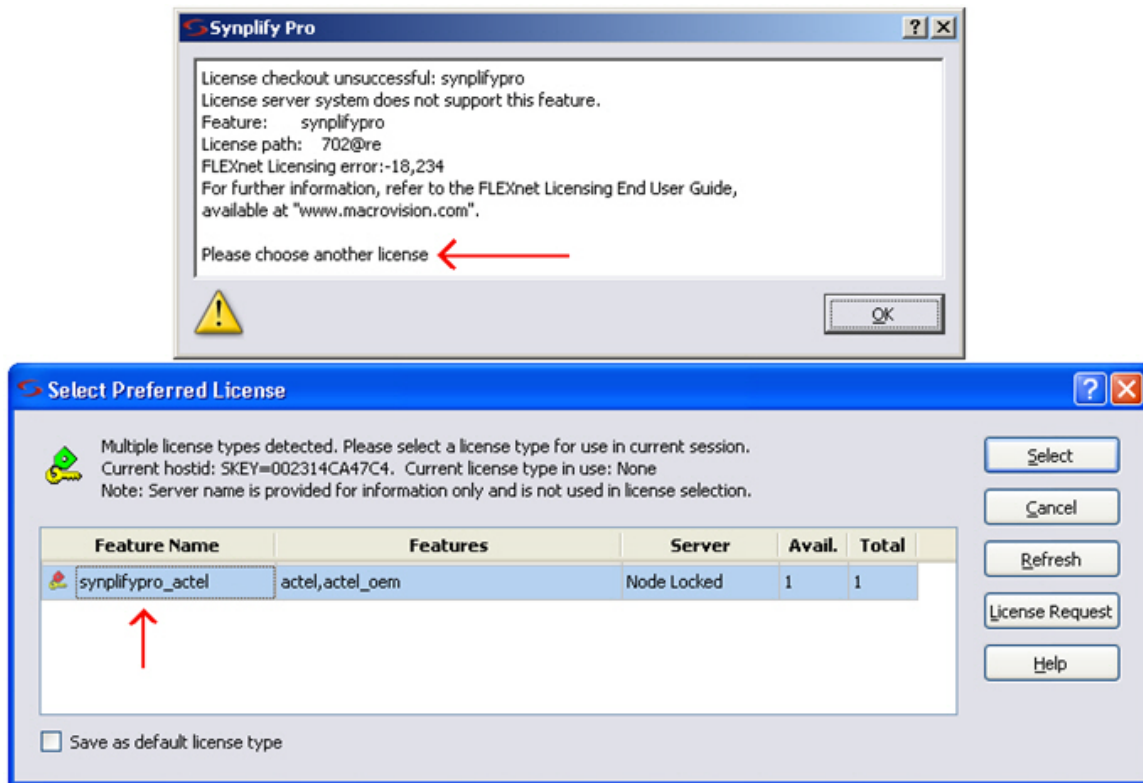
- A location specified in the LM_LICENSE_FILE environment variable
- The registry key HKEY_LOCAL_MACHINE/SOFTWARE/FlexIm License Manager/ACTLMGRD_LICENSE_FILE
- The path <current Libero install path>/Designer/adm/license.dat

To reset the list of paths used when searching for a license:

1. Rename the current LM_LICENSE_FILE variable and re-create a new LM_LICENSE_FILE variable with a new value (e.g. rename the license.dat file slightly so the path is new).
2. Delete the registry key HKEY_LOCAL_MACHINE/SOFTWARE/FlexIm License Manager/ACTLMGRD_LICENSE_FILE
3. Restart the Computer and invoke Libero IDE to ensure that the new path is used for the license.

synplify_pc or synplifypro Not Found Error

When invoking Synplify AE or Synplify Pro AE, the License Checkout Error message appears indicating that the Feature synplify_pc or synplify_pro cannot be found. However, once the OK button is clicked, you are then able to select your valid license called synplify_actel or synplifypro_actel.



Action

Modify the Libero IDE Tool Profile used for Synplify AE or Synplify Pro AE.

In the Libero IDE Project Manager, from the **Project** menu choose **Profiles**. Then select the Synthesis profile to modify and click **Edit**.

Add the additional parameters below, depending on whether you are targeting synplify.exe or synplify_pro.exe . This will specify the new feature name and prevent Synplify from looking for the obsolete feature name.

```
-licensetype synplify_actel
```

OR

```
-licensetype synplifypro_actel
```

Edit Profile [Synplify Pro E-2010.09A-1] [X]

Name:

Select a tool integration: ▼

Version: E-2010.09A-1

Location:

Additional parameters:

Run this tool in batch mode

Contacting Microsemi SoC Products Group Tech Support for Further License Troubleshooting

Node Locked Licenses

When contacting Microsemi SoC Products Group Tech Support regarding a Node Locked License, please supply the information generated below along with your problem description. **For Floating Licenses, please see the next page.**

1. A text output of your environment variable:
Open dos/command prompt window (i.e. **Start > Run** and type `cmd`) and change directory to the root directory of the c: drive (type `c:` and press `<enter>`). Use the command below to direct the environment variables to a text file called `env.txt` located on the c: drive.

```
set > env.txt
```

2. The Libero IDE installation information found at **Start > Programs > Microsemi > Libero IDE > About Your Installation**. Save this file on your c: drive so it can be submitted to Tech Support.
3. A text output of your system drive (typically C:) volume serial number. At a command prompt for the system drive, type either command below to direct the volume ID of the system drive to the text file `id.txt`:

```
vol c: > id.txt
```

OR

```
lmutil lmhostid -vsn > id.txt
```

4. A screenshot of the window that appears upon initial invocation of the software (the error message). Use **Alt + Print Screen** to take a screenshot. The image can be pasted into a document, email message, or into Windows Paint and saved as a JPEG file.
5. A copy of the `license.dat` you are using and the path of the file on your computer.
6. A screenshot of your System Properties, General Tab. Go to **Start > Settings > Control Panel** and double-click **System**.



7. For a Dongle based License: A screenshot of your flexid. At the command prompt type:
`lmutil lmhostid -flexid`

Please ZIP all of the information requested above and submit a Technical Support Case to Microsemi SoC Products Group Tech Support using one of the methods listed on the following web page:

<http://www.actel.com/support/default.aspx>

Floating Licenses

When contacting Microsemi SoC Products Group Tech Support regarding a Floating License, please supply the information generated below along with your problem description.

From the License Server Machine:

1. A copy of the edited License.dat file.
2. The folder path of the License.dat file.
3. The folder path of the License Daemon Executables.
4. The MAC ID of your Server using the command below at the command prompt:

Windows Server: `ipconfig /all > macid.txt`

Linux Server: `/sbin/ifconfig > macid.txt`

5. The License Server Logfile obtained by starting the License Server at the command prompt as follows:

```
lmgrd -c C:\flexlm\License.dat -l  
C:\flexlm\float_lic.log
```

The paths above are examples; your License.dat file might be in a different folder. The second option (dash l as in log) is a flag to create a Log File.

6. To confirm the Server Status after it is started and double-check the HostID, please also send the resulting files after running the commands:

```
lmutil lmdiag -n > diag_output.txt
```



```
lmutil lmhostid > server_host.txt
```

(lmutil executable should be found in the folder of downloaded daemons or in the Libero IDE Installation)

From the License Client Machine (may be the same computer as the server):

1. A text output of your environment variables. Open the dos/command prompt window (i.e. **Start > Run** and type cmd) and change directory to the root directory of the c: drive (type c: and press <enter>). Use the command below to direct the environment variables to a text file called env.txt located on the c: drive.

```
set > env.txt
```

2. A screenshot of the window that appears upon initial invocation of the software (the error message). Use **Alt + Print Screen** to take a screenshot. The image can be pasted into a document, email message, or into Windows Paint and saved as a JPEG file.

Please ZIP all of the information requested above and submit a Technical Support Case to Actel Tech Support using one of the methods listed on the following web page:

<http://www.actel.com/support/default.aspx>



Microsemi Corporate Headquarters
2381 Morse Avenue, Irvine, CA 92614
Phone: 949.221.7100 · Fax: 949.756.0308
www.microsemi.com

Microsemi Corporation (NASDAQ: MSCC) offers the industry's most comprehensive portfolio of semiconductor technology. Committed to solving the most critical system challenges, Microsemi's products include high-performance, high-reliability analog and RF devices, mixed signal integrated circuits, FPGAs and customizable SoCs, and complete subsystems. Microsemi serves leading system manufacturers around the world in the defense, security, aerospace, enterprise, commercial, and industrial markets. Learn more at www.microsemi.com.

© 2011 Microsemi Corporation. All rights reserved. Microsemi and the Microsemi logo are trademarks of Microsemi Corporation. All other trademarks and service marks are the property of their respective owners.

5-580-0014-1/03.11